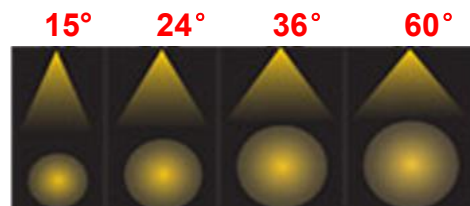




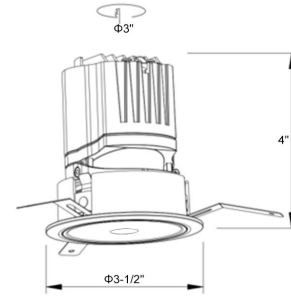
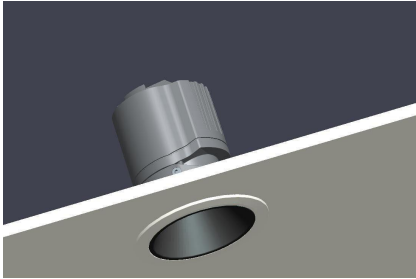
Description:

Less pin-hole series LED downlight, “Dark light” technology
 Total Power:8-12W,input:100-277V AC
 On-off/Triac/0-10V/Dali dimming available.
 Beam angle 15D/24D/38D/60D,Ra>90,UGR<13
 Round & square shape available,swiveling type
 5 years warranty, ETL certification
 Application:guest room,corridor, restaurant,meeting room,club

Code	Product name	Power	Input	Dimension	Cut-out	Ra	Lumen flux
DT-T8816TDA01-8W	Less pin-hole series	8-12W	100-277 VAC	Φ3-1/2"*4"	Φ3"	>90	85lm/w
Ctn size, Qty and G.W.				Lamp packing: 53*36*41cm 45pcs/ctn,G.W:22.5KG Driver J-box packing:39*38*27cm, 40pcs/ctn,G.W:16.4KG			



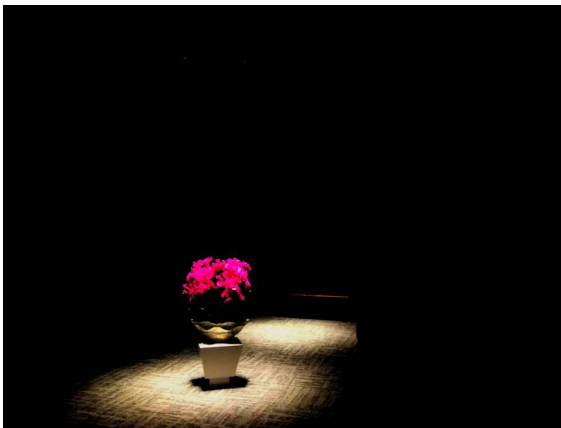
Installation picture & Size picture



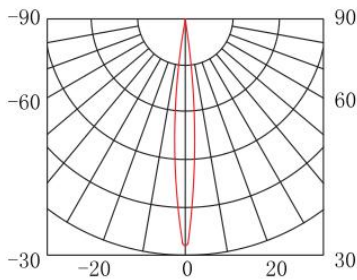
Dark-light technology downlight

VS

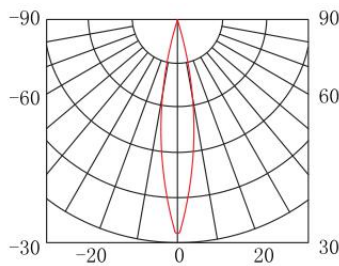
Ordinary LED downlight



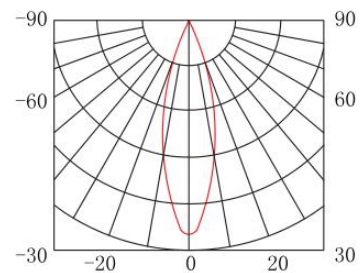
LUMINOUS INTENSITY DISTRIBUTION DIAGRAM



1m	5186 ±5 lx	33.29cm
2m	1250 ±5 lx	66.58cm
3m	535 ±5 lx	99.87cm
4m	307 ±5 lx	133.16cm
5m	190 ±5 lx	166.45cm



1m	3695 ±5 lx	37.07cm
2m	857 ±5 lx	74.14cm
3m	354 ±5 lx	111.2cm
4m	210 ±5 lx	148.27cm
5m	137 ±5 lx	185.33cm



1m	1670 ±5 lx	71.02cm
2m	437 ±5 lx	142.04cm
3m	190 ±5 lx	213.06cm
4m	108 ±5 lx	284.08cm
5m	73 ±5 lx	355.1cm

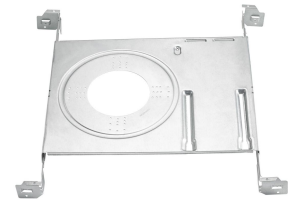


Bracket

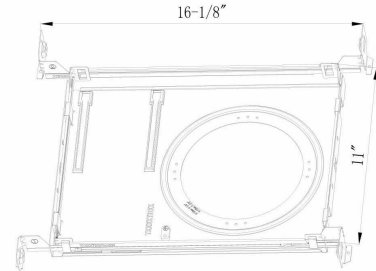
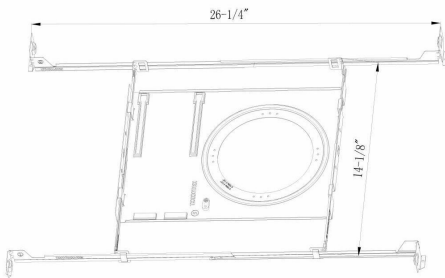
B4



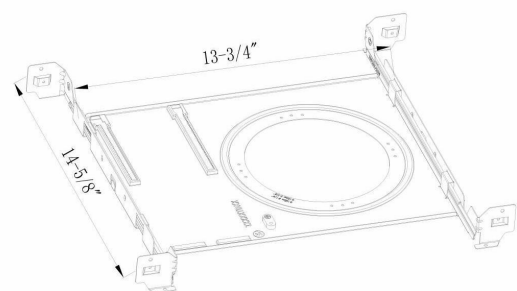
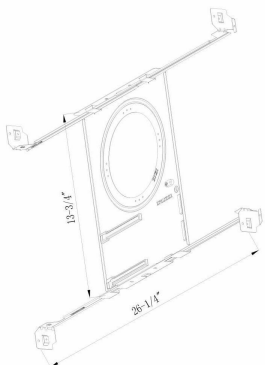
B2



B4



B2



Max

Min

Brackets for LED downlight

Materials:galvanized sheet, materials thickness: 0.8mm

Cut-out size(inch): $\Phi 3$ ", $\Phi 3-3/8$ ", $\Phi 3-7/8$ ", $\Phi 4-1/4$ ", $\Phi 5$ ", $\Phi 5-3/4$ ", $\Phi 6-1/8$ ", $\Phi 6-5/8$ ", $3" \times 3"$
(Square), $4-1/4" \times 4-1/4"$ (Square)

Two options: B4 and B2

Housing color: silver

5 years warranty, ETL certification

Bracket & LED downlight

B4



B2

